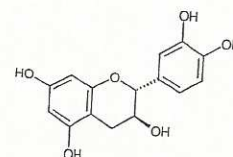


**INDOFINE Chemical Company, Inc.**

121 Stryker Lane, Building 30
 Hillsborough, NJ 08844 USA
 Phone: (908) 359-6778; Fax: (908) 359-1179

**HPLC****Lot No.: 13110415****(+)-CATECHIN****020976S****IDENTIFICATION**

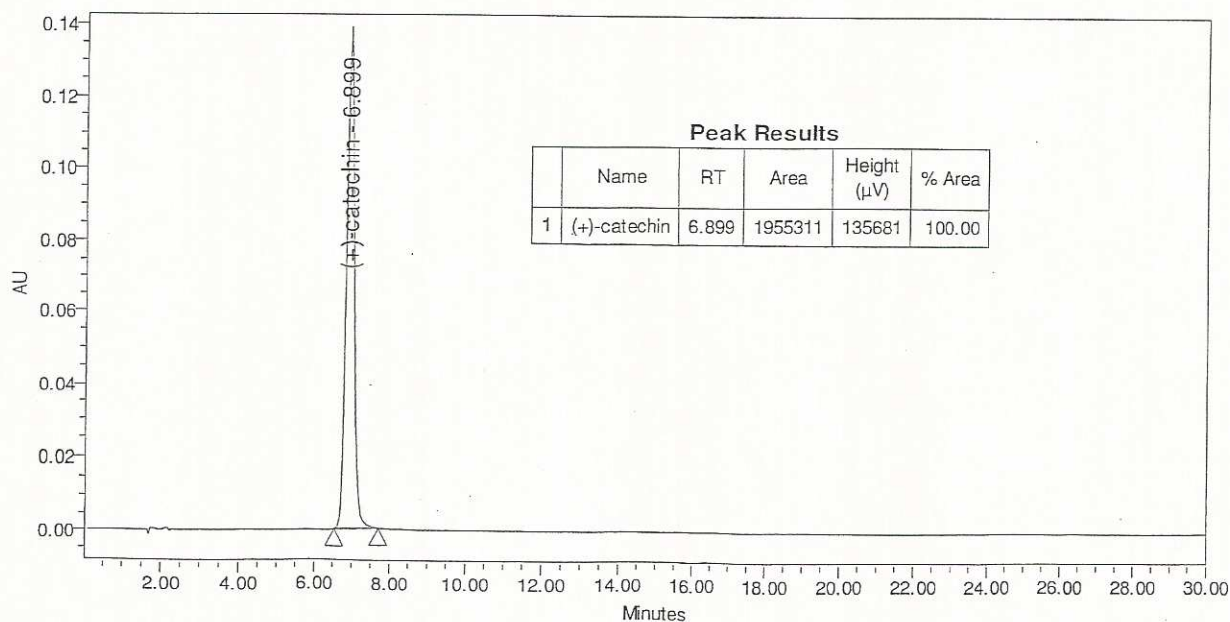
CAS number [154-23-4]
 Chemical family Catechins, Tanins
 Synonym (+)-3,3',4',5,7-Pentahydroxyflavan
 Molecular formula C₁₅H₁₄O₆
 Molecular weight 290.28

CERTIFICATE OF ANALYSIS

Appearance White powder
 Moisture 1.3 %
 Residual solvents < 0.5%
 Absorption maxima 280 nm in methanol
 [α]_D +14.2° c=1 in acetone/water (50/50, V/V)
 Thin layer chromatography support Silicagel
 solvent Ethylacetate/methylene chloride/formic acid (60/30/5, V/V/V)
 detection p-Anisaldehyde/acetic acid/sulfuric acid (1/40/1, V/V/V) 10mn at 110°C
 Storage Store at +2/8°C in a dry and dark place. Place in a desiccator under vacuum before use.

HIGH PERFORMANCE LIQUID CHROMATOGRAPHY

Column Symmetry Shield RP18® (4.6 x 150 mm), particle size 3.5 μm
 Solvent Water/methanol/acetonitrile (80/10/10, V/V/V)
 Flow rate 1 ml/mn
 Detector UV visible 280 nm
 Sample solvent Methanol



Assay by an HPLC method

Date of last QC-recheck August 2012
 Date of retest August 2016

The values given on the 'Certificate of Analysis' are the results determined at the time of analysis.